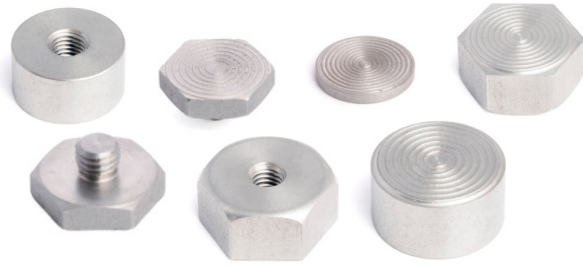


HS-AS Studs

glue face



Glue face studs are designed to provide a stronger glue surface to connect an accelerometer via.

Mounting Studs provide a secure, permanent or semi-permanent point of connection

Part No.	Connection Point 1	Material	Connection Point 2	
HS-AS014	1/4"-28 UNF Male		Glue Face x Ø19mm	
HS-AS019-15	Magnet	416 Stainless Steel	Glue Face x Ø15mm	
HS-AS019-18	Magnet	416 Stainless Steel	Glue Face x Ø18mm	
HS-AS019-24	Magnet	416 Stainless Steel	Glue Face x Ø24mm	For Quantity this product can be etched.
HS-AS019-30	Magnet	416 Stainless Steel	Glue Face x Ø30mm	For Quantity this product can be etched.
HS-AS019-38	Magnet	416 Stainless Steel	Glue Face x Ø38mm	For Quantity this product can be etched.
HS-AS027-M6	M6 Female	416 Stainless Steel	Glue Face x 20mm AF	
HS-AS027-M8	M8 Female	416 Stainless Steel	Glue Face x 20mm AF	
HS-AS027-M8x1	m8 x 1 Female	416 Stainless Steel	Glue Face x 20mm AF	
HS-AS027-1/4	1/4"-28UNF Hex Female	416 Stainless Steel	Glue Face x 20mm AF	
HS-AS029	10-32 UNF Male		Glue Face x Ø19mm	
HS-AS036	M8 Male		Glue Face x 20.6mm AF	



HS-AS Studs

glue face



Glue face studs are designed to provide a stronger glue surface to connect an accelerometer via.

Mounting Studs provide a secure, permanent or semi-permanent point of connection

Part No.	Connection Point 1	Material	Connection Point 2
HS-AS059-1/4	1/4"-28 UNF Female	416 Stainless Steel	Glue Face x Ø19mm
HS-AS059-1/4-25	1/4"-28 UNF Female	416 Stainless Steel	Glue Face x Ø25mm
HS-AS059-1/4-30	1/4"-28 UNF Female	416 Stainless Steel	Glue Face x Ø30mm
HS-AS059-M6	M6 Female	416 Stainless Steel	Glue Face x Ø19mm
HS-AS059-M8	M8 x 1.25 Female	416 Stainless Steel	Glue Face x Ø19mm
HS-AS087	Magnet - Ømm Centre Hole	416 Stainless Steel	Glue Face x Ø19mm

